

# MUG HEAT PRESS

---

## User Manual & Instructions



[www.uscutter.com](http://www.uscutter.com)  
425.481.3555

**USCutter** 



### TIME

180 Sec.



### TEMPERATURE

370° F



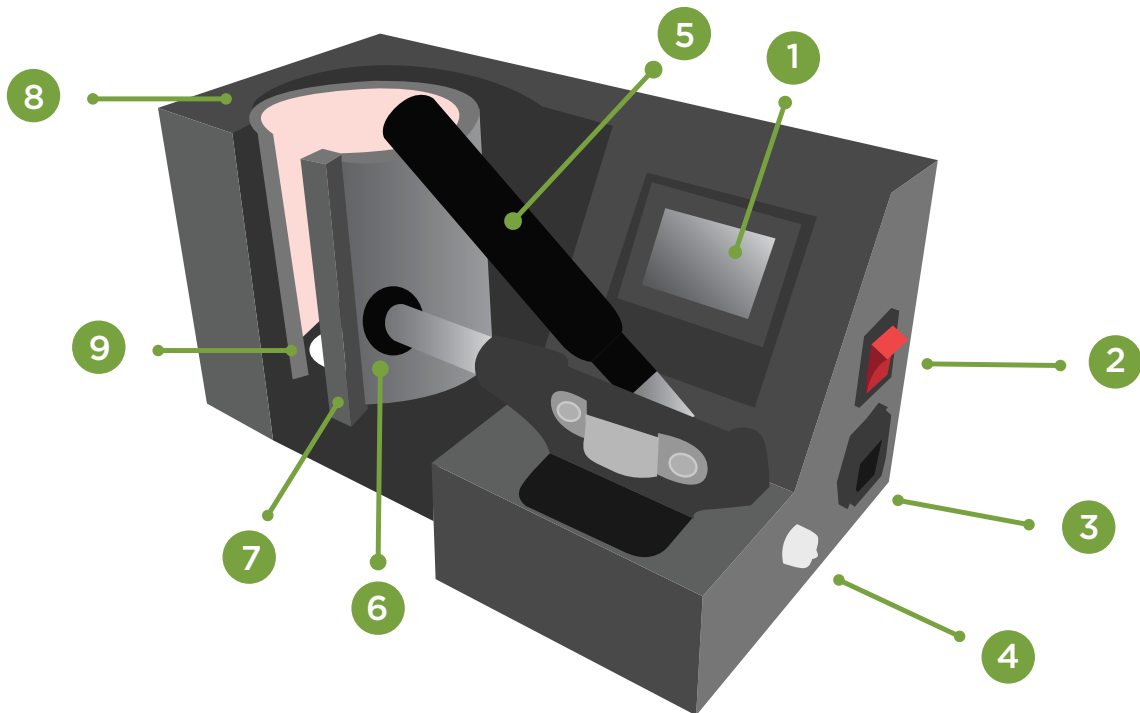
### PRESSURE

To make sure your pressure is set correctly twist the pressure knob while a mug is in the press. The mug should not be able to move when your pressure is set tight enough.



### COLD/HOT PEEL

**HOT  
PEEL**



- 1 CONTROL PANEL
- 2 POWER SWITCH
- 3 POWER CORD
- 4 TIMER/LIMITING SWITCH

- 5 HANDLE GRIP
- 6 PRESSURE KNOB
- 7 HEATING ELEMENT
- 8 MUG PRESS SHELL
- 9 HEIGHT ADJUSTMENT SPINDLE



Heat Resistant Tape

USCutter has everything you need to get started with your new mug press! From the sublimation paper and ink, to the heat resistant tape and mug blanks, we've got you covered! Visit us today at:

[www.uscutter.com/Heat-Transfer-Products](http://www.uscutter.com/Heat-Transfer-Products)

Due to the differences between mug presses, temperature and time might need to be adjusted slightly to achieve perfect results.

Mug press comes with a **90 day warranty**.



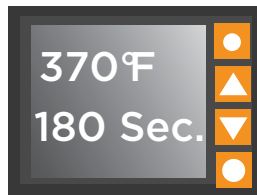
Please use caution when handling the mug press while on and with sublimated mugs as they become very hot. This machine is not to be used as a food processor.

1



Print the image you'd like to transfer onto the mug on sublimation paper using your dye-sublimation printer.

2



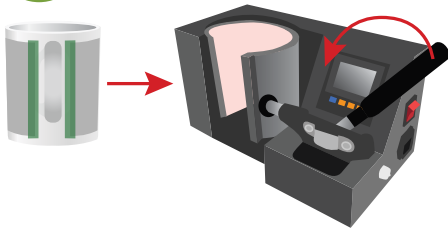
Set the time and temperature settings on your equipment to 370° Fahrenheit for 180 seconds. Press the **SET** button once. The display will prompt you to set "SV". This is the heat setting. Hit **SET** again and you will be prompted to set "SL" which is an idle temperature setting which can be used to lower the press temperature between cycles to preserve the heating element (Note: See info box on how to disable this optional feature.) Pressing **SET** again will bring you the "ST" prompt where you can press the arrow key to reach 170 seconds. Your press will heat up quickly.

3



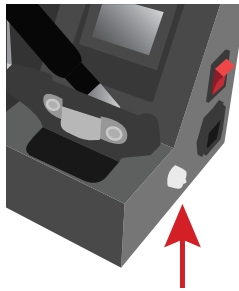
Adhere your image, printed-side-down, to the mug face, using a strip of heat-resistant tape on either side to hold the graphic in place.

4



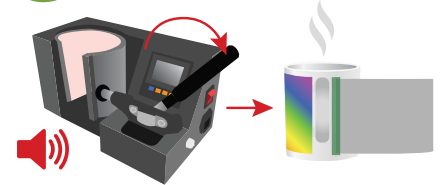
When the press is close to reaching your desired temperature setting, secure the mug in the press and clamp down to apply pressure. Pressure is adjusted via a knob near the shell which holds the mug in place. Make sure the mug is in there snug and you can't move it within its constraints. The timer should start automatically.

5



When your desired temperature has been reached the timer should start from its set point. If it doesn't hit the **TIMER/LIMITING** switch on the right base of the unit to manually start the timer.

6



An alarm will sound when the heat press cycle is over. Release the clamp. Escaping vapor is a good sign. If you see vapor released during the mug press cycle, pressure is insufficient. Tighten using the knob. Take the mug out by the handle. The mug will be very hot. Carefully remove tape and peel the sublimation transfer paper hot.

RAISE TEMPERATURE

PERFECT

LOWER TEMPERATURE



If your image is desaturated and faded (especially at the edges of your design), then you need to raise the temperature of your mug press.

**Image is vibrant and color is even.**

If your image is dark and has a brownish tint, then lower your temperature.

FOR BEST RESULTS - ALWAYS USE VIVID COLOR PHOTOGRAPHS AT HIGHEST POSSIBLE RESOLUTION

## Technical Information

## Substrate Chart

MACHINE TYPE	Mug Press Machine		Idle Temp	Press Temp	Pressure	Time
ACCOMMODATES	11 and 15 oz. White Ceramic Mugs	Ceramic Mugs	280° F	370° F	Medium/Firm	180 Sec.
APPLICATION	Sublimation & Vinyl	Glass Mugs	280° F	365° F	Light	120 Sec.
VOLTAGE	110V/220V	Travel Mugs	230° F	320° F	Medium	45 Sec.
POWER	450W	Glass Steins	280° F	265° F	Medium	3-4 Min.
TIME RANGE	0-999 Seconds	Ceramic Steins	280° F	365° F	Medium	260 Sec.
MAX. TEMP	200°C (400°F)					
HEATING ELEMENT	5" x 9" (11oz, 10oz)					

*Please make sure that you use sublimation blanks that have a polymer coating.*

## Troubleshooting

PROBLEM	SOLUTION
Some vapor comes out before I am done sublimating the image.	You should only see vapor after you release the mug. Try tightening the pressure until there is no smoke while the mug is being pressed.
The image on my mug is too low, too high, or pressed uneven.	Adjust the height adjustment spindle so your drinkware is centered within the mug press shell.
The temperature on screen is hovering around a low number and the press is not heating up.	If the heat press is not heating up and the temperature on the screen is staying in the double digits the press is probably just reading the room temperature. The press' heating element has more than likely burned out.

*For help with your mug press please call:  
425.481.3555 and press 3 for technical support.*