

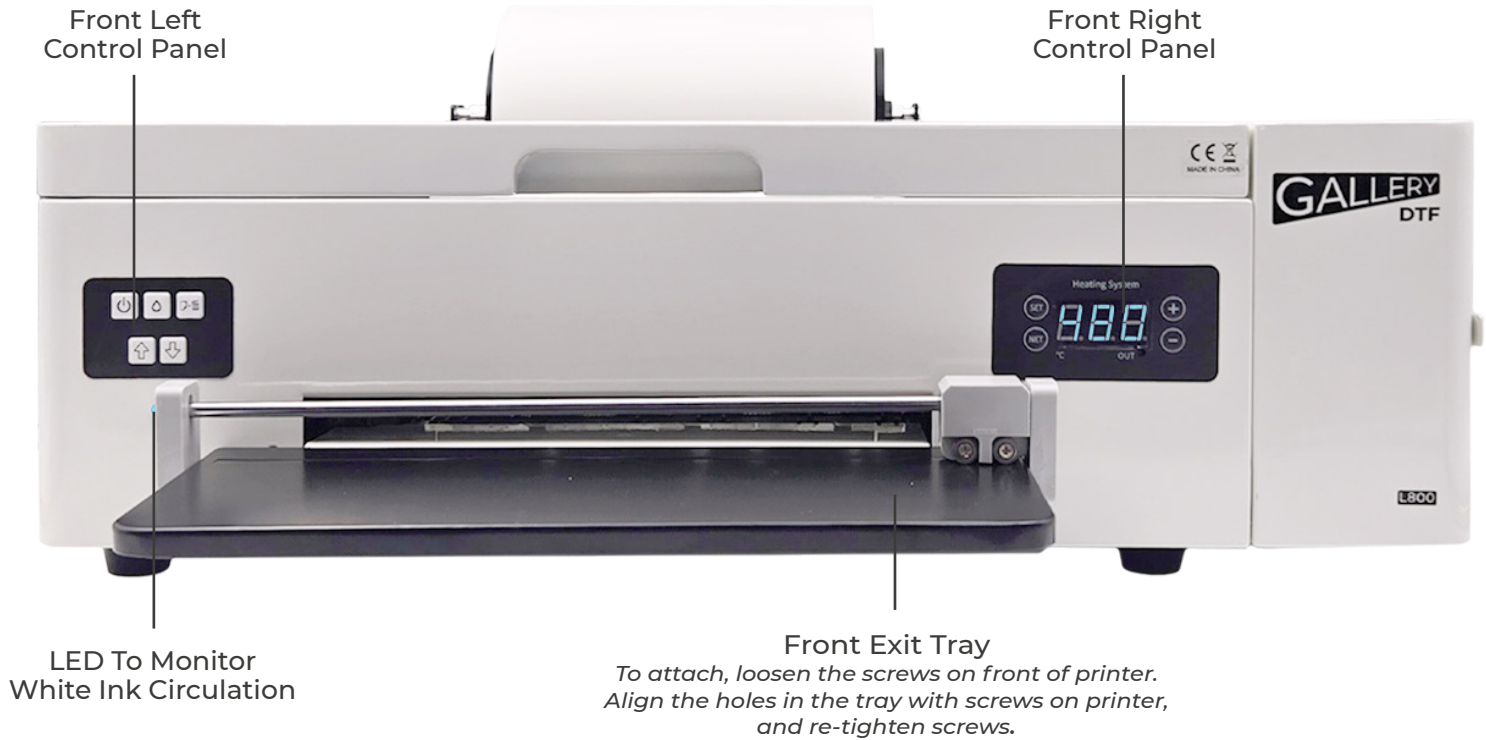
GALLERY DTF



GALLERY L800 DTF Printer User Manual

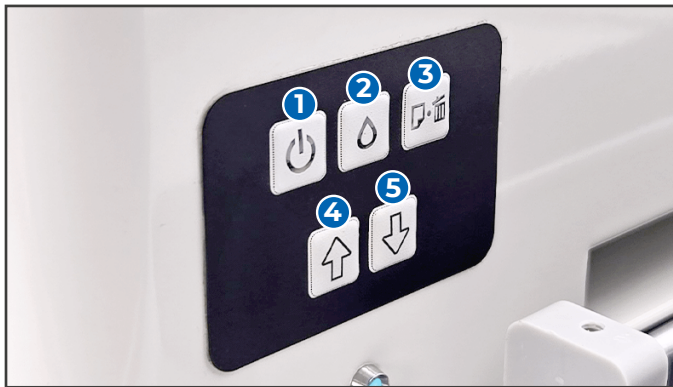
V.1.5 October 2024

Overview Of Main Components:



LED To Monitor
White Ink Circulation

Front Exit Tray
*To attach, loosen the screws on front of printer.
Align the holes in the tray with screws on printer,
and re-tighten screws.*



Front Left Control Panel

The front left control panel has five buttons:

- 1. POWER** - turns on power to the printer section. Solid Green = Ready, Blinking Green = Busy
- 2. INK BUTTON** - Initiates a head cleaning cycle.
- 3. END JOB** - Press at the end of a job, or press during a job to cancel a job in progress.
- 4. ENTER (REVERSE)** - pulls film back into the printer.
- 5. EXIT (FORWARD)** - pushes film forward out of the printer.

Note: The Green front panel Power LED must be ON whenever the PC wants to communicate with the printer



Front Right Control Panel

- SET** - Used when you want to set the target temperature (40 degrees Celsius is default).
- PLUS (+)** - Increases the target temperature.
- MINUS (-)** - Reduces the target temperature.
- NET** - Not currently used

Overview Of Main Components (Continued):



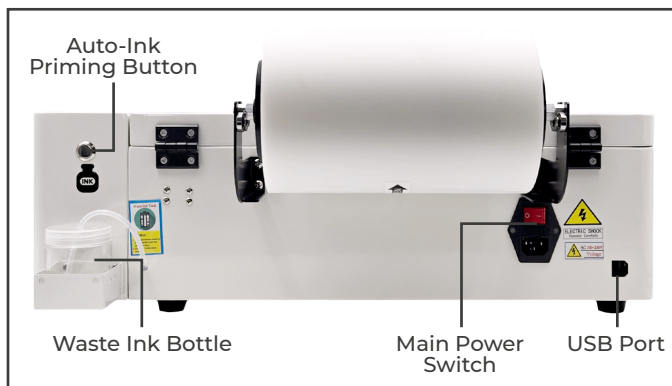
LED To Monitor White Ink Circulation

The front left side of the printer has an LED to show ink circulation status

BLUE = All parts of the ink circulation system are active and functioning correctly.

Blinking shows that head cleaning is actively occurring.

As long as this LED does not show RED, you know that the ink circulation system is fully functional



Back Of The Printer

The back of the printer has the USB port to connect to a Windows PC, the main printer power switch and the auto ink priming button.

The main power switch should always be left ON so that automatic ink circulation can occur.

The auto-ink priming button (with ink icon) avoids the need for needles. Press and hold 5 seconds to pull ink through the lines when loading ink for the first time.

The back of the printer also has screw holes to attach the film roller and holes for the waste ink bottle.

Note that the screws needed to attach rollers are already attached to the printer. Remove and reattach these screws when attaching the roll holders.

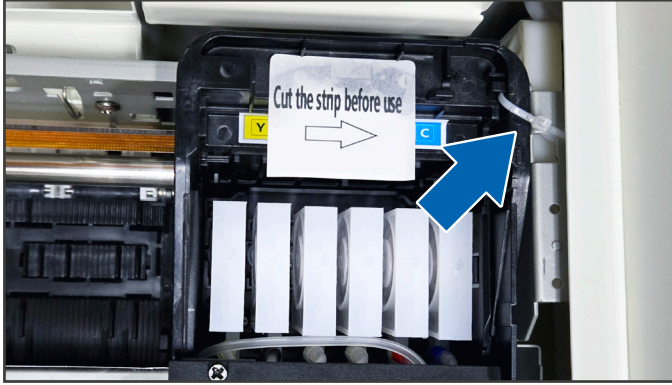
Right Side Of Printer

The right side of the printer has the refillable ink tanks and the Auto-ink-priming button. (For some models this button may be on the back of the printer.)

The Auto-ink-priming button avoids the need for needles. Press and hold to pull ink through the lines when loading ink for the first time.



Setting Up Your Gallery L800 DTF Printer:



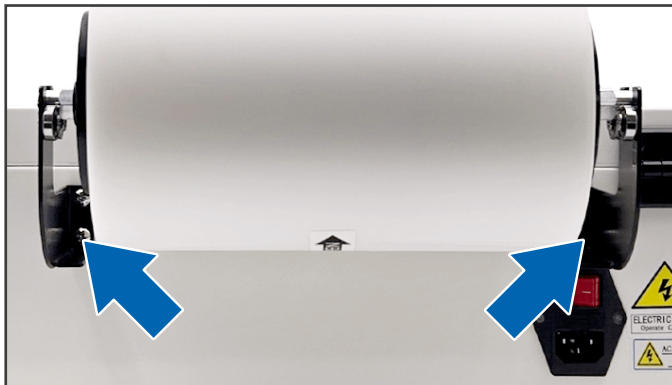
Step 1

Remove the zip tie next to the printhead.



Step 2

Attach the waste ink bottle holder to the back of the printer. Attach empty bottle to waste ink line.



Step 3

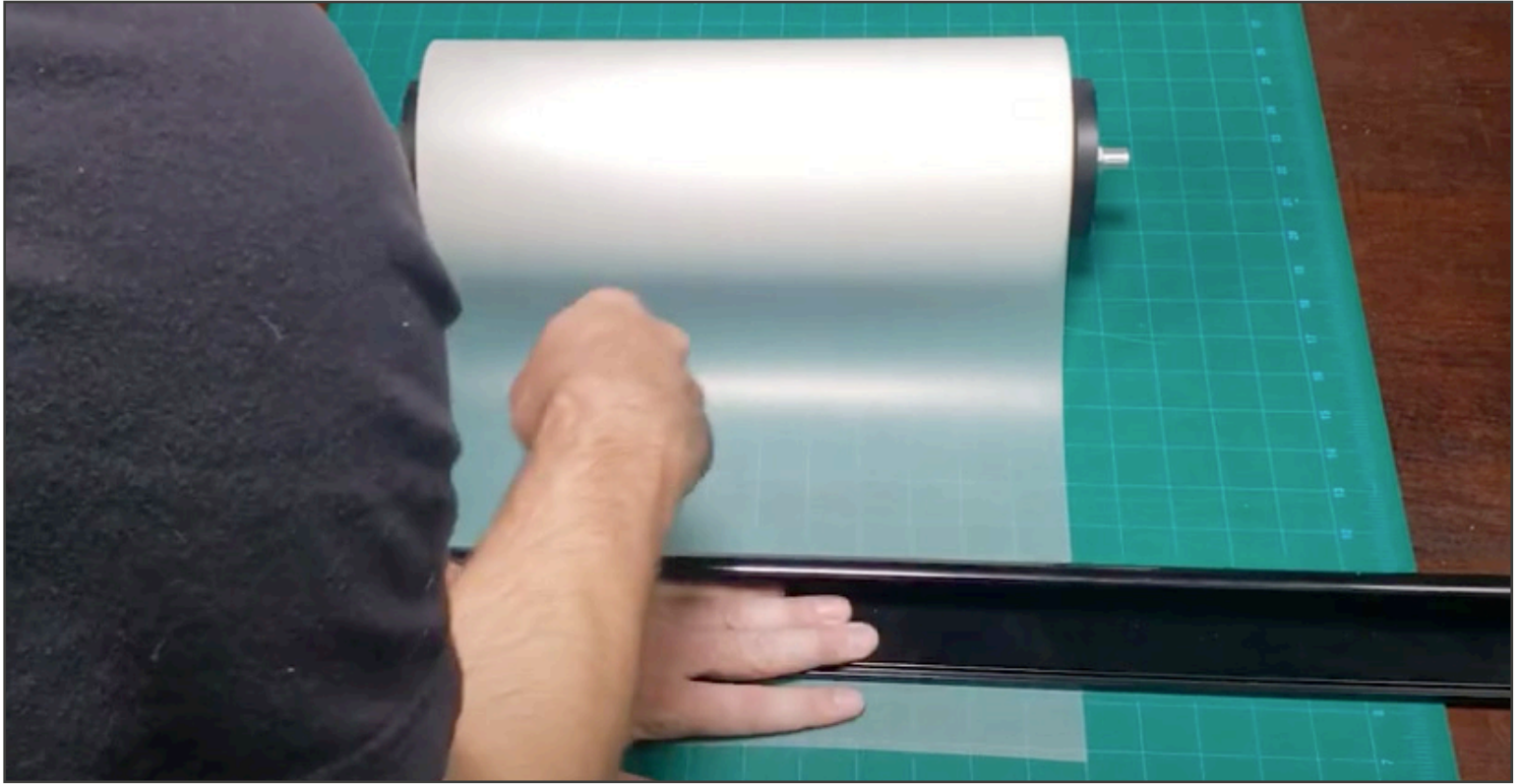
Screw the left and right film roller brackets to the back of the printer.



Step 4

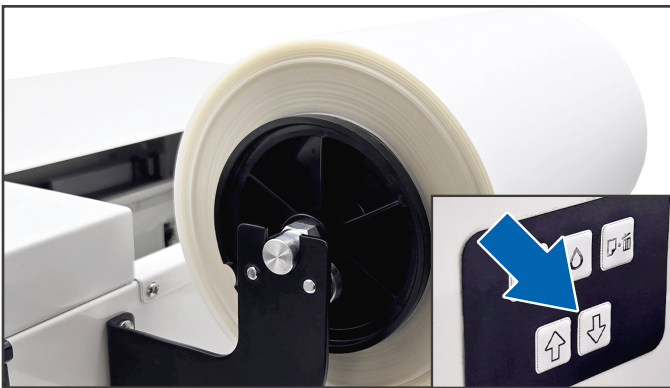
Attach one of the flanges to the film roller bar, place film on bar, then attach second flange. Adjust position of film on roller bar so that it loads into the printer straight and does not pull to one side.

Setting Up Your Gallery L800 DTF Printer (Continued:)



Step 5

Cut film edge to be exactly perpendicular to the film sides so that the film will feed in straight.



Step 6

Place film into printer and press Exit (Forward) button on front control panel to pull film through the printer.

Observe that the film is moving through the printer without drifting to one side or the other. Straight feeding of film is essential to printer operation.

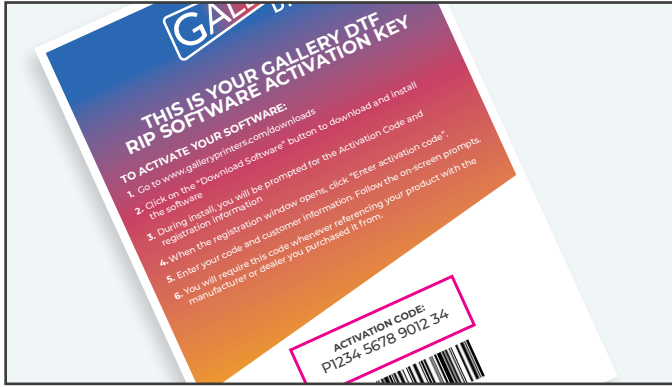


Step 7

Before loading ink into the printer, please install the software and run a blank test job to verify that no circuitry or connections were damaged during shipping. Operating the printer for a short period without inks will not harm the printer.

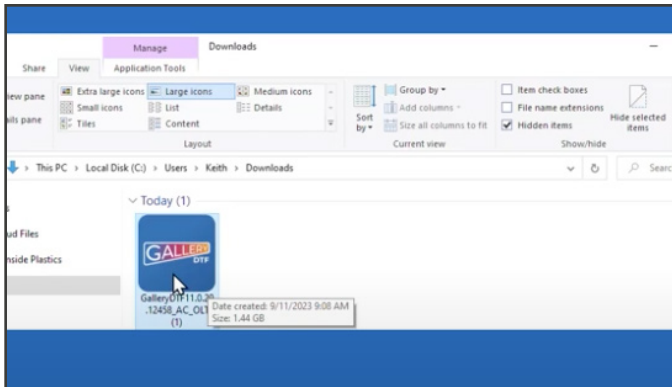
SEE NEXT PAGE FOR SOFTWARE SET UP

Setting Up The PC Software (Windows 10/11)



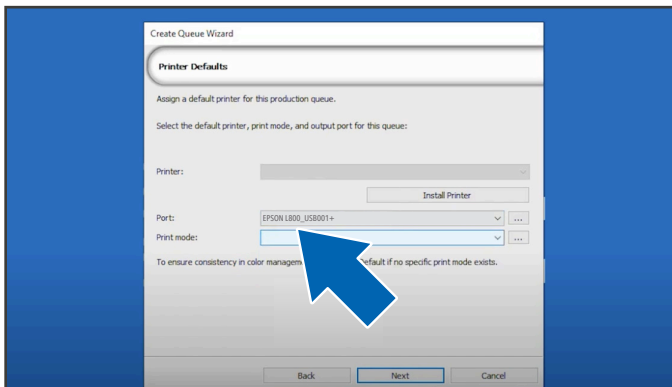
Step A

Find the card in the printer box with the download link for the software and your software activation code.



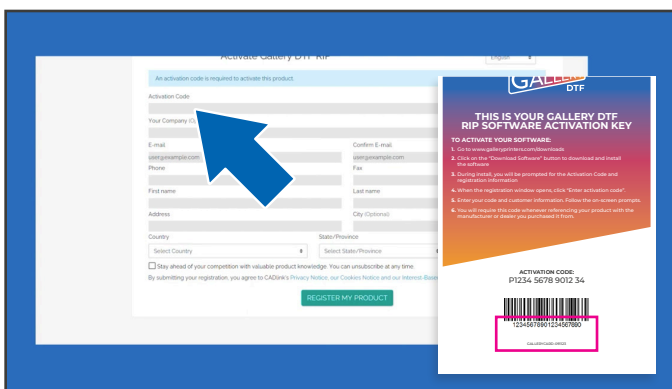
Step B

Download and install the Gallery DTF RIP software, select Gallery L800 printer (Make sure USB cable is attached and printer front power LED is Green).



Step C

During install, select EPSON L800 as the communications port. (This is what Windows calls the Gallery L800 printer).



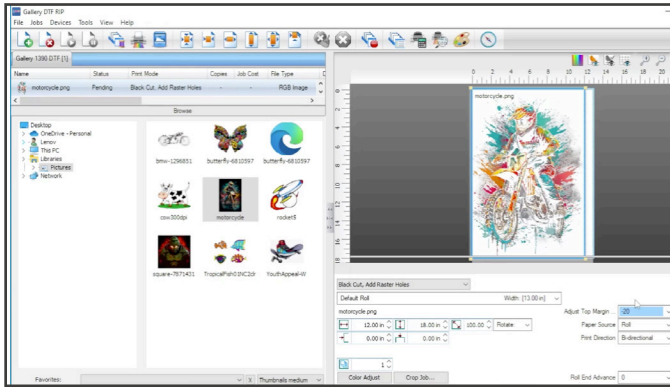
Step D

Under the HELP menu, activate your software using the license key number on the card in the printer box.

You can watch a video of the full software download/install sequence at the following link: galleryprinters.com/videos.

Continue To Next Page To Complete Gallery L800 Printer Set Up

Setting Up Your Gallery L800 DTF Printer Continued:



Step 8

Once software is installed, load a test file and try to print it. Observe that the printhead moves back and forth many times, the film advances and the front control panel blinks green while printing and goes solid green shortly after printing ends.

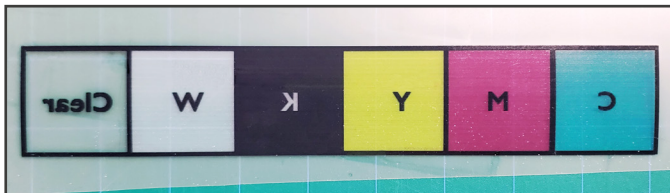


Step 9

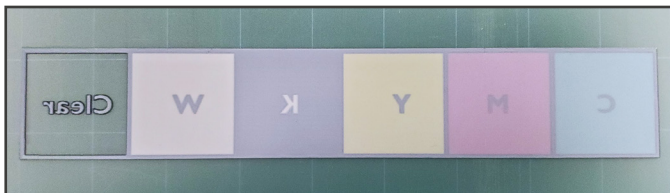
Shake ink bottles vigorously.

Pour ink into ink tanks using funnels (right side of printer).

Press/hold auto-ink-priming button to feed ink through lines.



White Not Yet Flowing



White Flowing Properly

Step 10

Your initial print may require 2 or 3 head clean cycles to fully prime the printhead.

Print a nozzle check and a few small test jobs to be sure all colors are present.

Note: This image can be downloaded at galleryprinters.com/manuals

Frequently Asked Questions

Q: *How do I get black text in my design to print white?*

A: Select the White only printmode from the pull-down menu under the work area in the DTF RIP software.

Q: *How do I avoid white pixels from showing at the edges when pressing onto a black T-shirt?*

A: In the RIP software, press the Color Adjust button under the work area and set choke to a higher value. Note that both Cold Peel and Hot Peel printmodes have already been pre-set to a choke value of 3 which is ideal. For White Only and Black Cut/Add Raster Holes printmodes, the choke value is set to 0 as the ideal starting value.

Q: *How do I get my colors to be more vivid?*

A: In the RIP software, press the Color Adjust button and increase the Saturation slider value.

Q: *How long should I wait after printing before adding the powder?*

A: You can add powder as soon as the white ink is not pooling and the ink appears sticky, not runny. If you print large contiguous areas with pooling white, you may have to wait several minutes, otherwise you can powder almost immediately.

Q: *Once cured, how long will a DTF print last before it needs to be heat pressed onto a garment?*

A: Prints properly stored should be able to be used up to a year from when they were created.

Q: *What is the shelf life of the inks?*

A: CMYK inks perform best when used within 9-12 months. Gallery bottles show date information. White ink performs best when used within 6-9 months. Gallery bottles show date information.

Q: *Is it necessary to print white under every pixel or can I avoid white ink when printing on white T-shirts?*

A: The powder will stick and cure to the colored inks, but the wash life cycle of the garment will be lessened without white ink. Additionally, the white ink allows the design to stretch - depending on your garment and design, stretch-ability may be desirable.

Q: *Can I add powder while the film is still on the printer exit tray?*

A: NO! This poses a risk of powder getting onto the printhead. Always powder well away from the printer.

Q: *What is the wash lifetime of a DTF print?*

A: A properly printed, cured and applied Cold Peel DTF print should last up to 50 washes. Hot Peel typically lasts 40 washes.

Q: *How do I get a softer hand feel to my prints?*

A: Use less white ink (note that less ink reduces the wash lifetime). Use the Black Cut, Add Raster Holes print mode in the DTF RIP software. Using the Cold Peel or Hot Peel printmodes, use Production Plug-in called Rasterization.

Q: *How can I get more White ink onto my prints?*

A: Copy and Rename a print mode (eg. Cold_Peel to MaxWhite_Cold_Peel) and then edit the new printmode ColorLayer->ProcessingOptions to increase Underbase and Maximum Ink percentages. Note that increasing White may impact soft hand feel.

Troubleshooting

Printer Will Not Print.

Check that both rear power switch and front panel Green LED printer power switches are ON.

On the Windows PC, check under Settings->Devices->Printers&Scanners that EPSON L800 is not Offline.

In Gallery DTF RIP software, check under Devices->Manage_Devices->Device_Properties that the Gallery L800 port shows EPSON L800.

With the above checked, in the RIP software, try running a head clean to see if the printer responds.

Red LEDS Flash In An Alternating Fashion

This indicates that the waste ink counter has reached its maximum limit. In an upcoming release of Gallery DTF the counter will be reset within Gallery DTF RIP software under: Devices->ManageDevices->DeviceProperties->ResetInkWastePadCounter.

It is also possible to use an external program, please contact your distributor for assistance.

Red LEDs Flash Simultaneously

This represents an error. Most likely cause is that the encoder ribbon cable has dust that needs to be cleaned. Errors can sometimes be cleared by powering off for 10 seconds while the carriage is in the middle. Power on causes a new self-test.

You can contact USA based support to assist in reading the error code or cleaning the ribbon cable.

Red Ink LED Comes On Solid

This means that one of the ink channels is starved for ink. In most cases, this condition will clear itself and printing will continue. A short single press will clear the black channel, otherwise a short double press will clear the other color channels. Press/hold the front ink button to initiate a head cleaning

One Of My Colors Is Not Printing, Or White Ink Is Not Printing Correctly

Check to see that the ink lines feeding the printhead do not have any air gaps. Press auto-priming button. Perform a couple of head cleanings.

Print a nozzle check. If the nozzle pattern does not look complete for one or more colors, perform additional head cleaning cycles.

Note that performing too many head cleanings in a row can cause foaming which adds air. Pause 5-10 minutes between every 3 head cleanings.

The Film Advances And Retreats When I Am Not Printing Anything.

This is normal. The printer needs to advance the film to expose the squeegee when auto-cleaning the printhead.

GALLERY
DTF



Congratulations On Your Purchase Of The Gallery L800 DTF Printer.

In order to get maximum benefit from your printer, please familiarize yourself with the printer and its functions.