

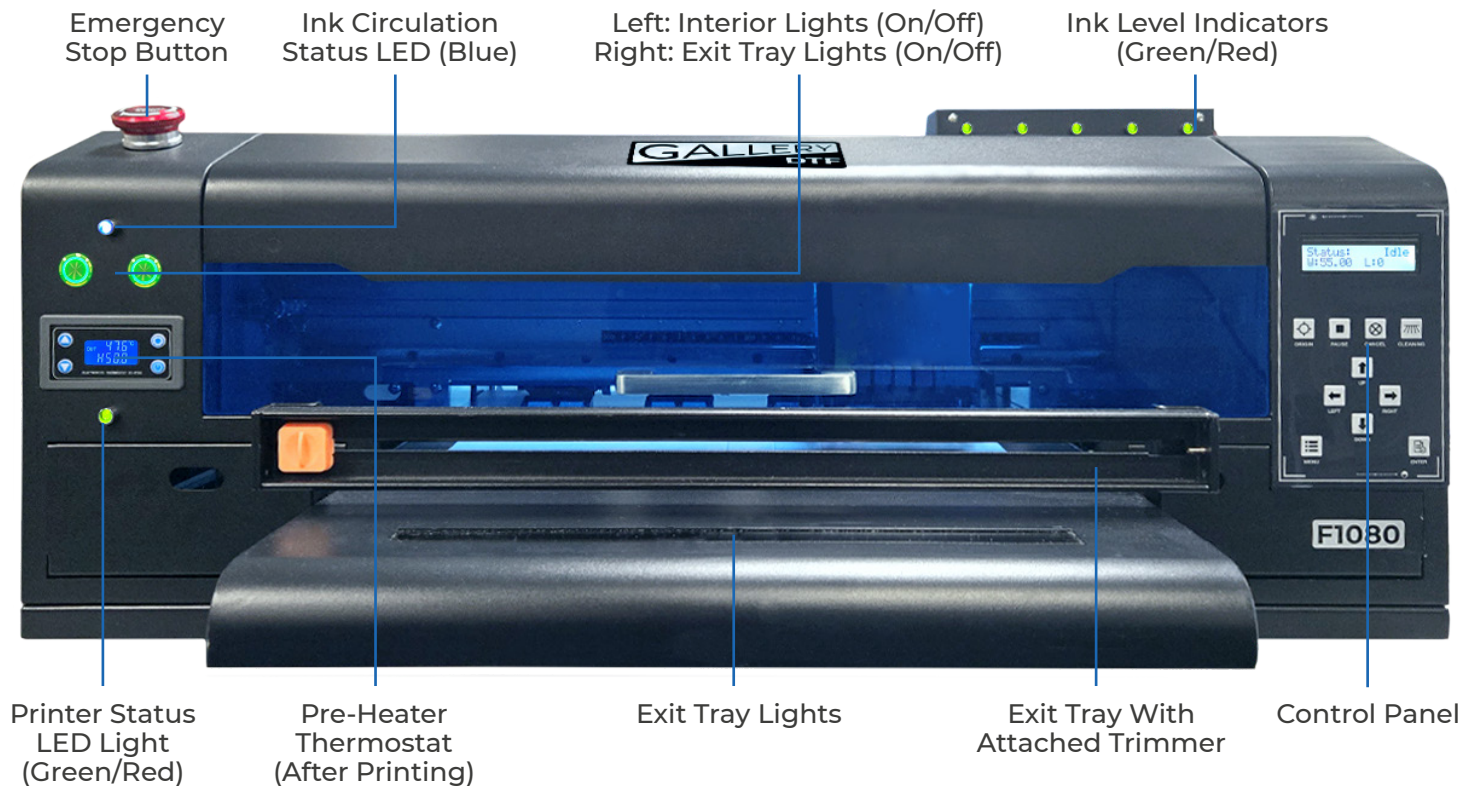


GALLERY GEN 2 F1080

DTF Printer User Manual

V 1.2 September 2025

Overview Of Main Components:



Status Indicator LED Colors:

In general Green or Blue means normal operation. Red means that an error has occurred and specific action by the operator will be required to solve the problem.



Blue LED To Monitor White Ink Circulation

The top left of the printer front has a Blue LED to show ink circulation status.

SOLID BLUE = All parts of the ink circulation system are active and functioning correctly.

BLINKING BLUE = Shows circulation is actively occurring.

As long as this LED does not show RED, you know that the ink circulation system is healthy and functional.



Green LED To Monitor Printer Status

The bottom left of the printer has a Green LED to show the printers status.

SOLID GREEN = Printer is functioning correctly.

SOLID RED/BLINKING RED = An error has occurred which requires the user to take action to correct it.

Overview Of Main Components (Continued):



Pre-Heater Thermostat:

The Pre-heater thermostat allows for temperature control of heat provided to the film after printing and just before applying powder.

Typically the factory set temperature of 42°C is set and there is no need to adjust the values.



Ink Tank Level Indicator LEDs:

Each ink tank has its own sensor and LED to let you know when each ink color needs to be replenished.

SOLID GREEN = Ink tank level OK.

FLASHING RED = Ink tank needs more ink.
(A buzzer will also sound)

Note: Ink tank low level indication occurs while there is still enough ink to continue printing. This allows for ink to be replenished while a job is still printing.



Control Panel:

In typical use, the control panel works in conjunction with PrintExp software (running on a PC). The control panel reflects commands from the printer motherboard. The control panel has some functionality while the PC is not connected to the printer.

1. ORIGIN - Sets offset where printing starts.

2. PAUSE - Pauses/restarts job.

3. CANCEL - Cancels the current job.

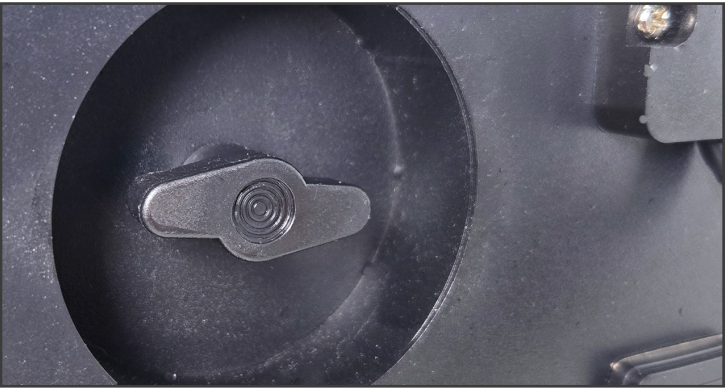
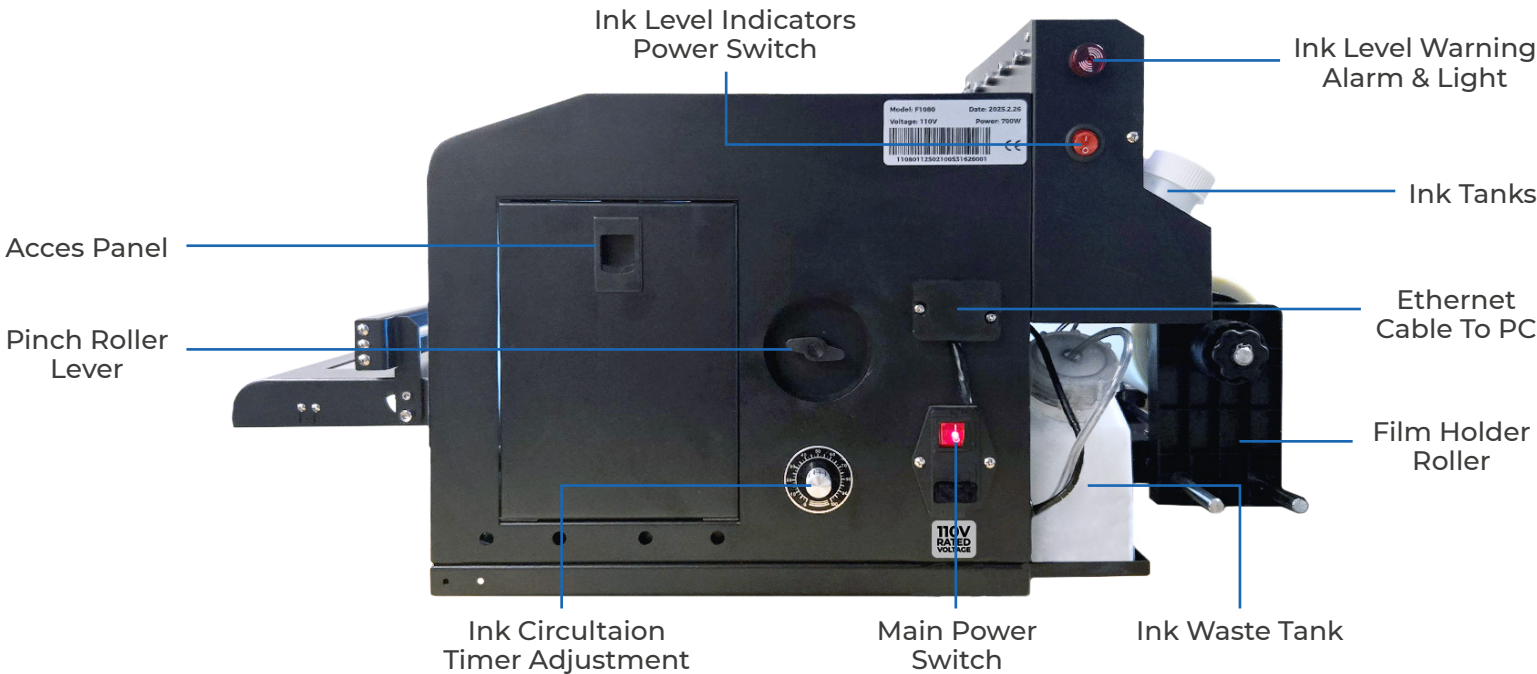
4. CLEANING - Starts normal cleaning cycle.

5. UP/DOWN/LEFT/RIGHT - Moves the carriage or film.

6. MENU - Accesses the menu functions.

7. ENTER - Accept menu option/Confirm cancel/Home carriage and park head in capping station.

Overview Of Main Components (Continued):



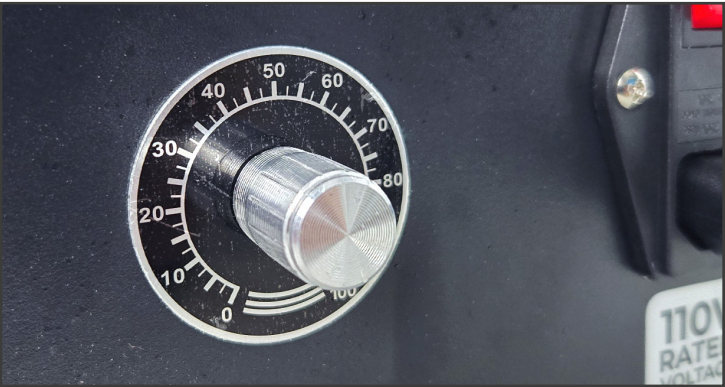
Pinch Roller Lever

Used to raise/lower pinch rollers when loading film.



Ink Level Indicator Warning Alarm

When ink level is low this alarm will beep and the red light will flash.



Ink Circulation Timer Adjustment

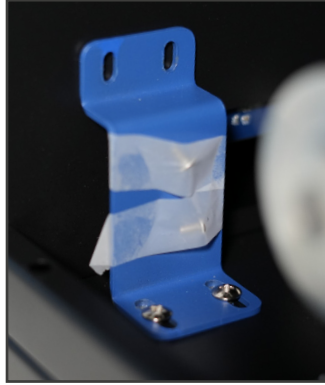
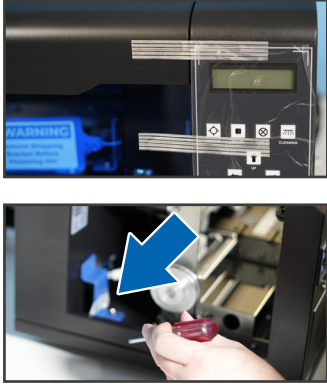
Used to adjust ink circulation speed of the peristaltic pump.



Ink Tanks

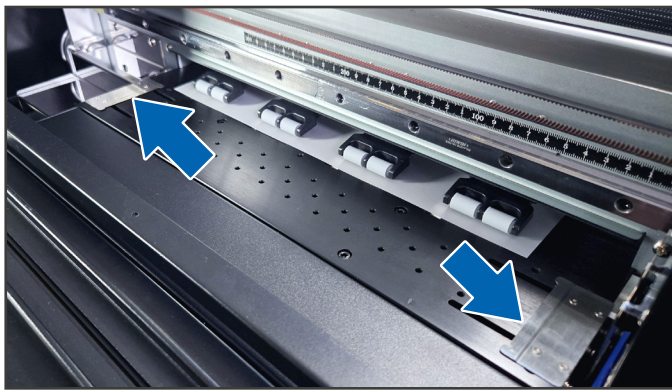
250ml size tanks with ink level sensor, White tank also has ink stirring motor and ink circulation line

Setting Up Your Gallery F1080 DTF Printer:



Step 1

Remove the shipping tape and open the front cover. Unscrew the Blue shipping bracket from the carriage, tape two of the 4 screws to the blue bracket and use the other two screws to store the shipping bracket at the back left side of the printer as shown.



Step 2

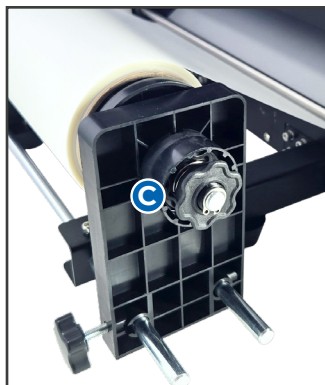
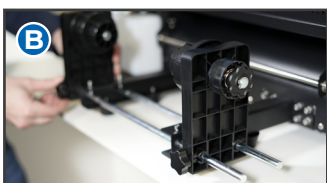
Place the two media guides in the printer on the left and right side of the vacuum bed. Keep the media guides loosely beside the film so that only the small round edges are over the film.

Note: The media guides are only used to keep the edges of the film down, they are not used to force the film in a specific direction.



Step 3

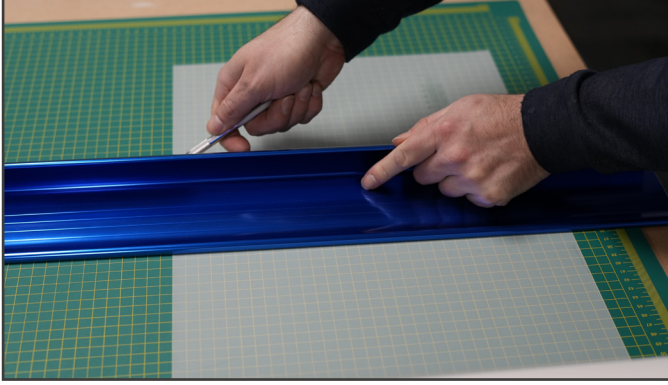
- A. Loosen the screws on the front of the printer
- B. Use them to attach the exit tray and trimmer.
- C. Connect the exit tray LED power connector



Step 4

- A. Attach the Film Unwinder assembly with an Allen key using the provided screws as shown in the diagram.
- B. Place the left/right black plastic film holders on the metal bars and adjust position with the bottom knobs.
- C. If more/less film release tension is needed, adjust the torque wheel as required.

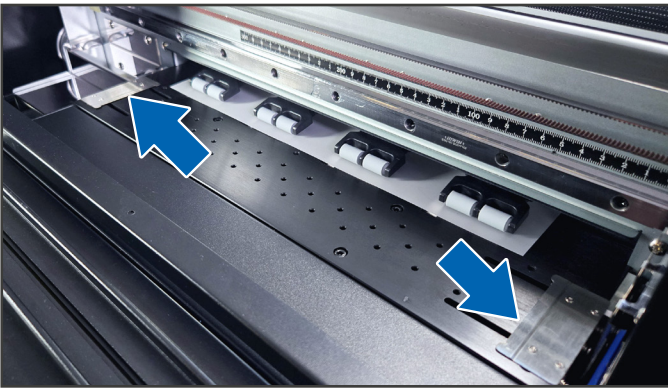
Setting Up Your Gallery F1080 DTF Printer (Continued:)



Step 5

Cut film edge to be exactly perpendicular to the film sides so that the film will feed in straight.

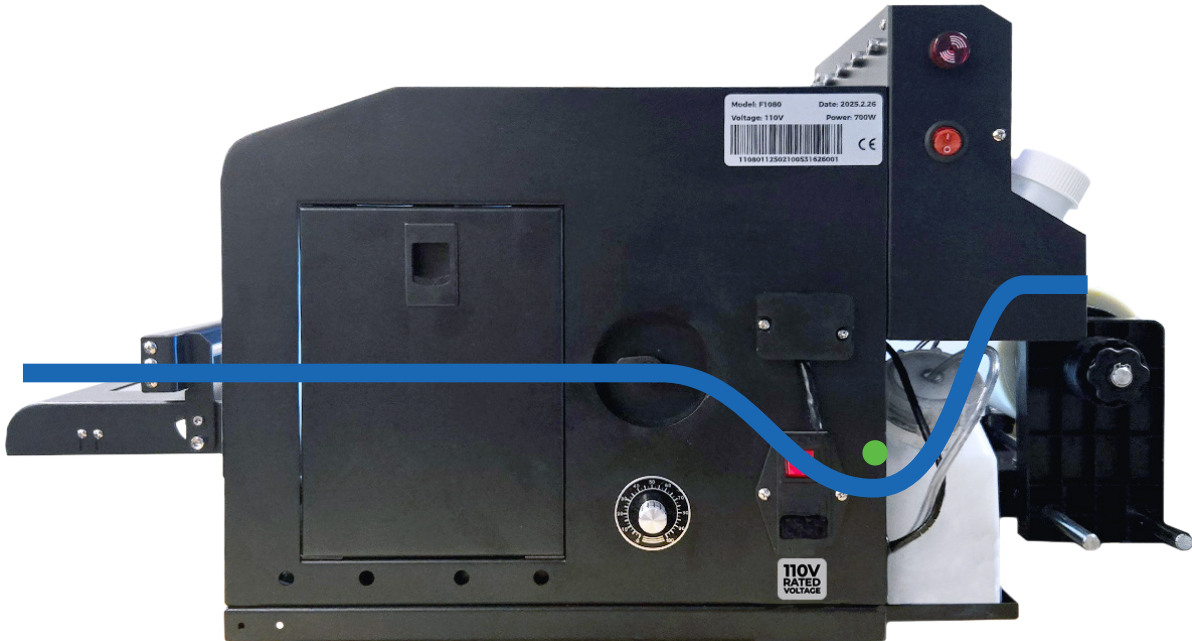
Print on the cloudy side of the film. This is the side of the film where you can scratch away the coating.



Step 6

Place the two media guides in the printer on the left and right side of the vacuum bed. Keep the media guides loosely beside the film so that only the small round edges are over the film.

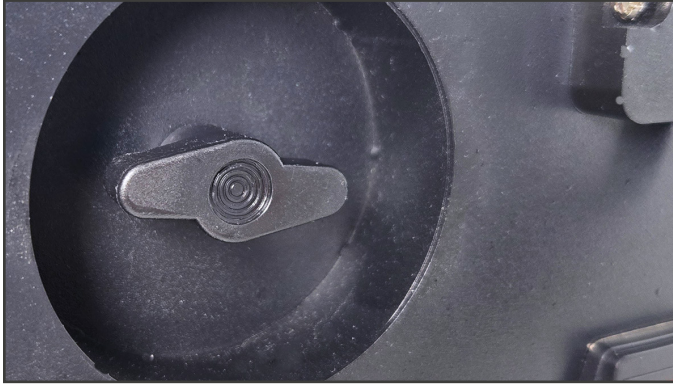
Note: The media guides are only used to keep the edges of the film down, they are not used to force the film in a specific direction.



Film Loading Diagram

Film should be loaded under the film tension bar, then into the body of the print so that it sits in the center of the pinch rollers.

Setting Up Your Gallery F1080 DTF Printer (Continued:)



Step 7

Raise the pinch rollers with the lever on the right side of the printer and lower the pinch rollers when film is loaded.

It is important to ensure that the film is loaded into the printer in such a way that it will not drift left or right when printing.

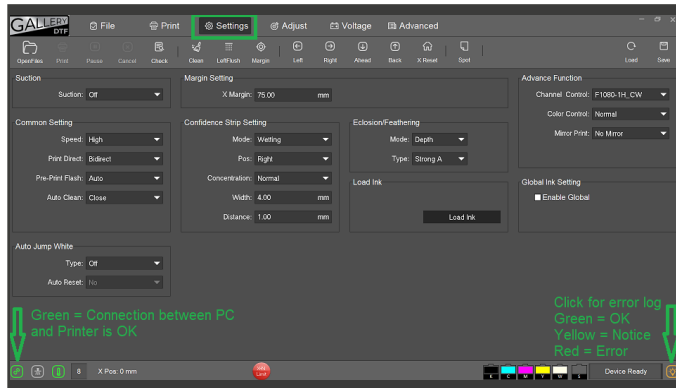


Step 8

Use the control panel arrow keys to advance the film to see that it remains in a straight line.

Setting Up The PC Software (Windows 10/11)

BEFORE LOADING INK, INSTALL AND VERIFY SOFTWARE COMMUNICATION TO THE PRINTER

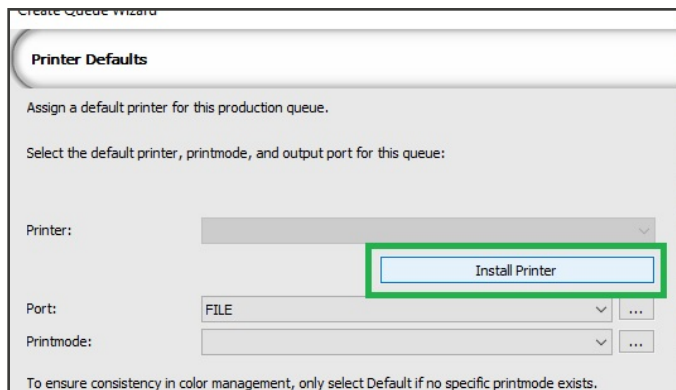


Step A

In the large box that came with the printer you will find a thumbdrive with PrintExp software. Copy PrintExp to a directory on your printer, open the PrintExp folder and scroll down to PrintExp64.exe to launch the program.

In PrintExp software verify that the bottom left and bottom right icons are green to show that communication between PC and printer are OK

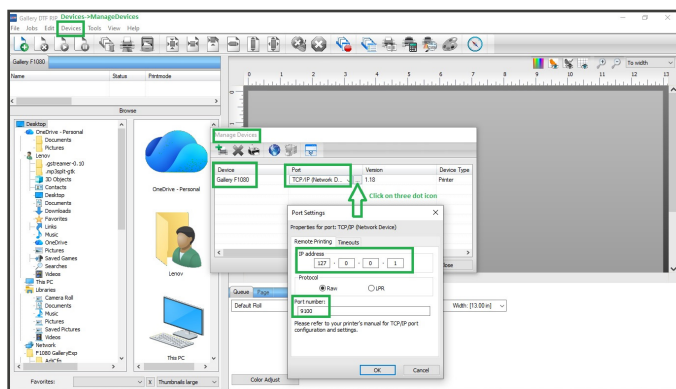
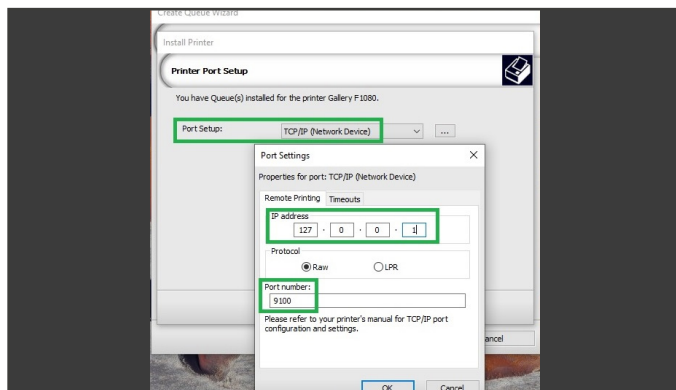
Press the Clean icon to send a head cleaning command. Press the Check icon to print a nozzle check (77 or 88 for offset value)



Step B

When installing Gallery DTF RIP software, select and download F1080 as the printer driver and follow the prompts until you are asked for a Port - select TCP/IP with the address set to 127.0.0.1 port 9100

In cases where prompted, just click NEXT or FINISH to proceed through the entire setup.



Step C

When you relaunch Gallery DTF RIP software, check under Devices->Manage_Devices->Device_Properties that the Gallery F1080 is set to TCP/IP 127.0.0.1 port 9100.

Full step-by-step installation and usage training videos for PrintExp and Gallery DTF RIP software are provided in the online web-based Teachables training videos you received with your printer purchase.

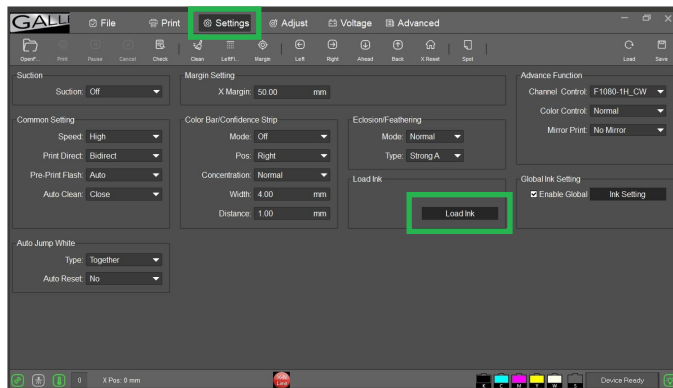
Loading Inks

BEFORE LOADING INKS RUN A DRY (NO INK) JOB TO ENSURE ALL PRINTER FUNCTIONS AND COMMUNICATIONS ARE WORKING.



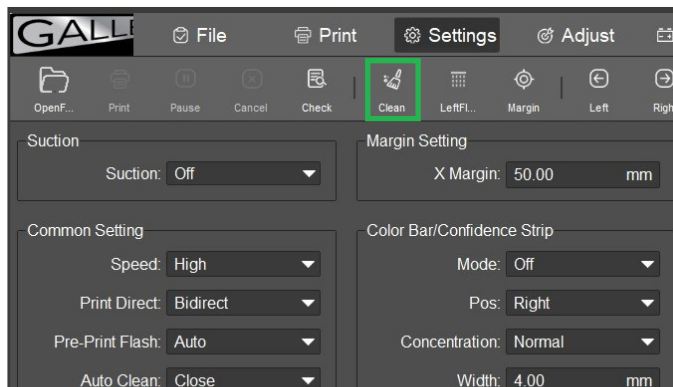
Step 1

Once you have installed both software products and verified that you are able to print a job without any ink, you are ready to load ink in the ink tanks.



Step 2

In PrintExp, under the Settings Menu, press the Load Ink button for 15-30 seconds and observe that all ink lines and all dampers have ink in them. Press Ink Load button again to stop loading ink.



Step 3

After loading ink, execute a few head cleanings to clear any excess ink in the capping station and verify that ink is flowing with a clean nozzle check where you see all 6 channels show a clean nozzle check pattern.

Please watch the Teachables training videos to get a full step-by-step view of the entire installation and set-up procedures.

You Are Now Ready To Start Printing With Your Gallery 1390R DTF Printer.

Frequently Asked Questions

Q: *How do I get black text in my design to print white?*

A: Select the White only printmode from the pull-down menu under the work area in the DTF RIP software.

Q: *How do I avoid white pixels from showing at the edges when pressing onto a black T-shirt?*

A: In the RIP software, press the Color Adjust button under the work area and set choke to a higher value. Note that both Cold Peel and Hot Peel printmodes have already been pre-set to a choke value of 3 which is ideal. For White Only and Black Cut/Add Raster Holes printmodes, the choke value is set to 0 as the ideal starting value.

Q: *How do I get my colors to be more vivid?*

A: In the RIP software, press the Color Adjust button and increase the Saturation slider value.

Q: *How long should I wait after printing before adding the powder?*

A: You can add powder as soon as the white ink is not pooling and the ink appears sticky, not runny. If you print large contiguous areas with pooling white, you may have to wait several minutes, otherwise you can powder almost immediately.

Q: *Once cured, how long will a DTF print last before it needs to be heat pressed onto a garment?*

A: Prints properly stored should be able to be used up to a year from when they were created.

Q: *What is the shelf life of the inks?*

A: CMYK inks perform best when used within 9-12 months. Gallery bottles show date information. White ink performs best when used within 6-9 months. Gallery bottles show date information.

Q: *Is it necessary to print white under every pixel or can I avoid white ink when printing on white T-shirts?*

A: The powder will stick and cure to the colored inks, but the wash life cycle of the garment will be lessened without white ink. Additionally, the white ink allows the design to stretch - depending on your garment and design, stretch-ability may be desirable.

Q: *Can I add powder while the film is still on the printer exit tray?*

A: NO! This poses a risk of powder getting onto the printhead. Always powder well away from the printer.

Q: *What is the wash lifetime of a DTF print?*

A: A properly printed, cured and applied Cold Peel DTF print should last up to 50 washes. Hot Peel typically lasts 40 washes.

Q: *How do I get a softer hand feel to my prints?*

A: Use less white ink (note that less ink reduces the wash lifetime). Use the Black Cut, Add Raster Holes print mode in the DTF RIP software. Using the Cold Peel or Hot Peel printmodes, use Production Plug-in called Rasterization.

Q: *How can I get more White ink onto my prints?*

A: Copy and Rename a print mode (eg. Cold_Peel to MaxWhite_Cold_Peel) and then edit the new printmode ColorLayer->ProcessingOptions to increase Underbase and Maximum Ink percentages. Note that increasing White may impact soft hand feel.

Troubleshooting

(the Teachables training videos that you received with your printer contain additional resources for troubleshooting issues)

Printer Does Not Power On

Check that the Red Emergency Power Stop Switch on the left side of the printer is in the raised position.

Left Side Front Bottom LED Shows Red

In PrintExp, click on the bottom right icon to open the errors log. Click on the line with the error to read most likely error cause.

PrintExp Will Not Launch

The instructions on the thumbdrive that came with the printer contain links to Microsoft C++ Redistributables. Install these.

Printer Will Not Print

In PrintExp software, check that the icon in the bottom left corner is Green to show PC to Printer communications are OK.

If the PrintExp icon is still red, watch the Teachables training video that shows how to set your PC to Printer IP address.

Gallery DTF RIP Will Not Launch

You must be connected to the internet for Gallery DTF RIP to resync every few days. After sync, you can be offline for a few days.

If you are using the software in 14-day demo mode, you must constantly be connected to the internet. After 14 days, demo is over.

Gallery DTF RIP Does Not Send Jobs To The Printer

In Gallery DTF RIP software, under Devices->Manage Devices, ensure that you are communicating on TCP/IP port 127.0.0.1



Congratulations On Your Purchase Of The Gallery F1080 DTF Printer.

In order to get maximum benefit from your printer, please familiarize yourself with the printer and its functions.