

GALLERY

DTF



GALLERY

A3 Powder Shaker Machine - 110V

V. 1.2 January 2024

Gallery A3 Powder Shaker Machine - 110V

The Gallery A3 powder shaker machine is designed to work in conjunction with roll fed DTF printers that print film up to 13 inches wide.

The powder shaker works independently of the printer, where the take up reel motor advances only when film drops below the sensor inside the main powder area. This allows the printer to be set to any speed and the powder shaker will automatically adjust itself. Film can be wound on the take up reel either clockwise or counterclockwise depending on user preference.

Loading Film Into The Powder Shaker



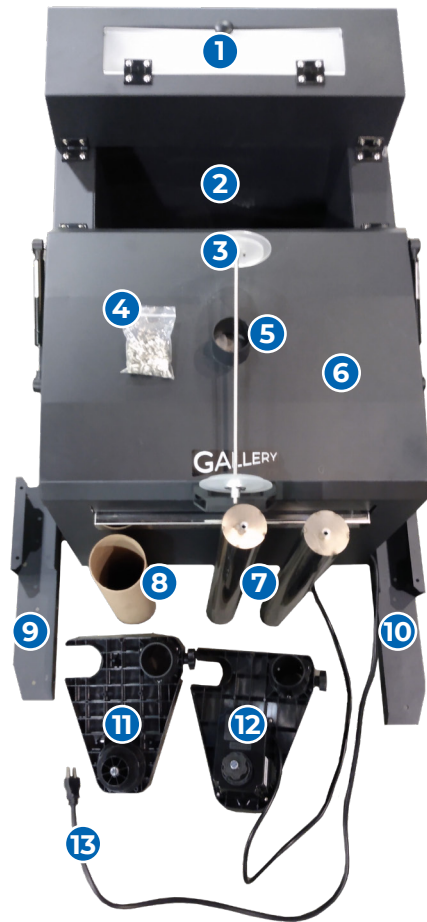
Control Panel

The main control panel allows adjustment of powder delivery speed, clapper speed to knock of excess powder and curing temperature in the heating section.

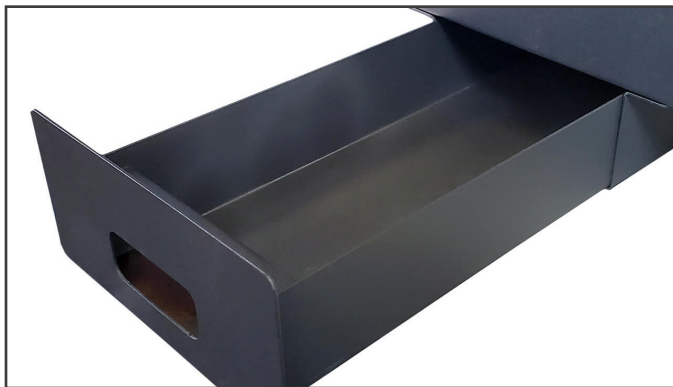
1. MAIN POWER SWITCH
2. PRESENT VALUE OF TEMPERATURE
3. SET VALUE OF TEMPERATURE
4. HEATER ON/OFF
5. TARGET TEMPERATURE UP/DOWN
6. CLAPPER ON/OFF
7. SET CLAPPER SPEED +/-
8. POWDER ON/OFF
9. SET POWDER SPEED +/-

Assembly Instructions:

After opening the crate, check to see that you have the pieces listed in the photo below:



1. POWDER HOLDER
2. POWDER APPLICATION AREA
3. POWDER SPILLOVER CONTAINMENT BAR
4. BAG OF SCREWS
5. EXHAUST VENT
6. HEATING AREA (UNDER THIS COVER)
7. TAKE UP REEL ROLLER BARS
8. EMPTY TAKE UP REEL CARDBOARD TUBE
9. LEFT TAKE UP REEL BRACKET
10. RIGHT TAKE UP REEL BRACKET
11. LEFT TAKE UP REEL HOLDER
12. RIGHT TAKE UP REEL HOLDER WITH MOTOR
13. 110V POWER CORD



Powder Catch Tray

The powder catch tray at the bottom of the shaker can be removed and powder can be reloaded into the top powder holder.



Take Up Reel Power Switch

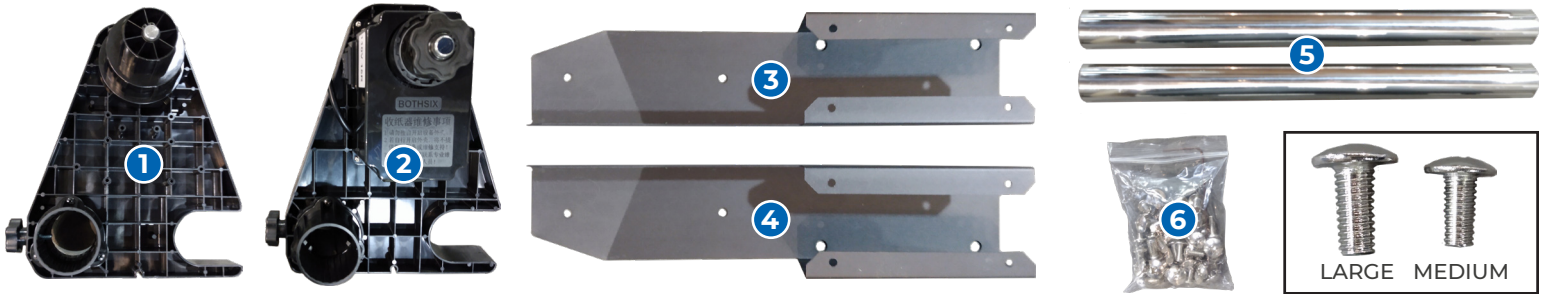
The power switch for the take up reel motor is separate from the main control panel.

Centered = OFF

Up/Down = Enabled

Note: Motor only advances once film sensor inside powder chamber is triggered.

Assembly Instructions (Continued):

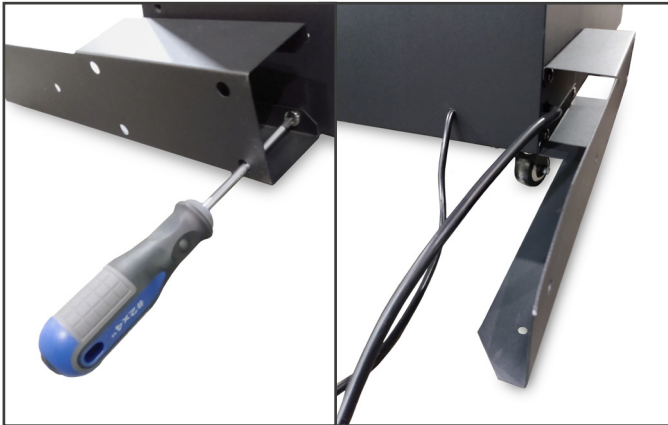


Take Up Reel Assembly:

Assembly of the Takeup reel can be accomplished with a screwdriver.

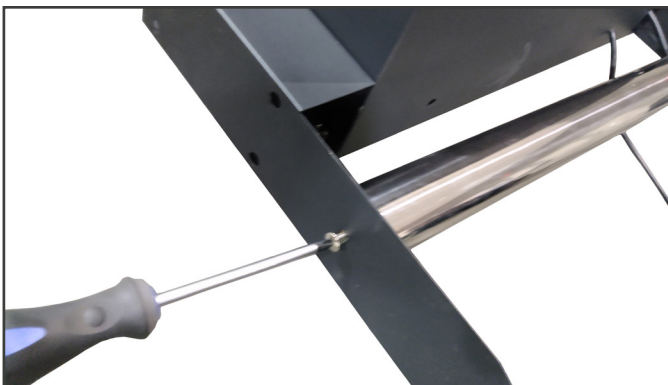
You will need the following pieces:

1. LEFT TAKE UP REEL HOLDER
2. RIGHT TAKE UP REEL HOLDER WITH MOTOR
3. LEFT TAKE UP REEL BRACKET
4. RIGHT TAKE UP REEL BRACKET
5. TAKE UP REEL ROLLER BARS
6. BAG OF SCREWS (Large & Medium Screws Will Be Used)



Step 1: Take Up Reel Assembly

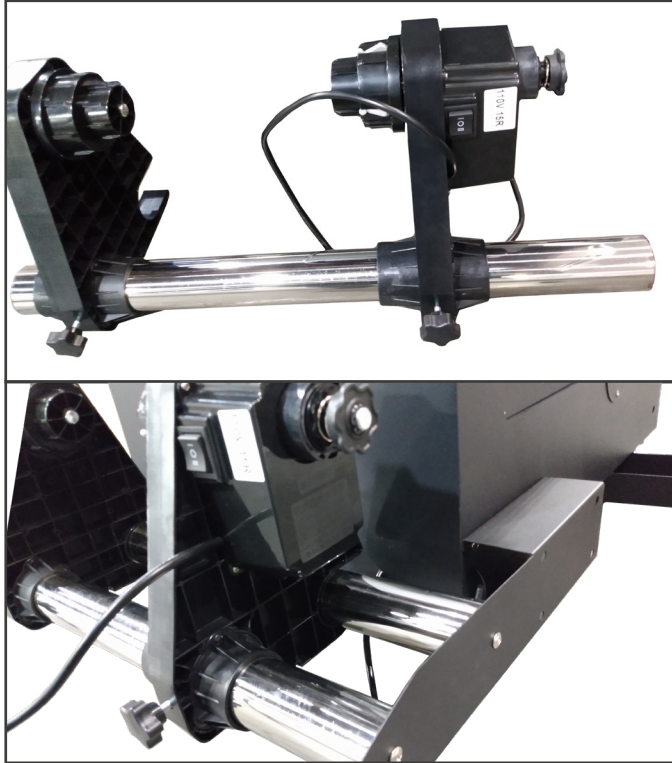
Using the Large screws, attach the left & right brackets with 4 screws on each side of the powder shaker machine.



Step 2: Take Up Reel Assembly

Using the medium screws, attach the back take up reel roller bar.

Assembly Instructions (Continued):



Step 3: Take Up Reel Assembly

Thread the 2 black holders onto the front roller bar and then screw into place.



Step 4: Powder Spillover Control Bar

Adjust the small powder spillover control bar to maximum width and place in the bottom of the shaker machine.

The spillover control bar attempts to keep powder away from the edges of the bottom tray

Note: Use of the powder spillover control bar is optional.



Your correctly assembled powder shaker system should look like this



**Congratulations On Your Purchase Of
The Gallery A3 Powder Shaker Machine.**