



**The Gallery Direct to Film (DTF) System Offers A Fully Integrated Solution Providing The Easiest Entry Point To Professional Quality DTF Output.** Includes Printer, Inks, Powder, Film, PC Software, Online Training Course, & Free Lifetime US Based Support.



## GALLERY DTF PRINTER

- Roll & Sheet printing - efficient printing for mass printing or on-demand printing
- Compact size - take it anywhere, to the office, to tradeshow and more!
- 6-channel printing - more vivid colors
- 1390 Printhead - Fuller, more accurate color, ink jet is smooth with white ink circulation system, and less nozzle blockages



## GALLERY DTF INKS

- Made in the USA and manufactured to exacting clog resistant quality standards
- White Ink Circulation - we've incorporated dozens of features to monitor, prime, mix, circulate, flow and track ink flow to minimize the chances that you will encounter problems



## GALLERY DTF POWDER

- lower melting point, dye migration resistance and stretchability all in one product so that shaker machines can be used without the need to switch to black or specialty powders.

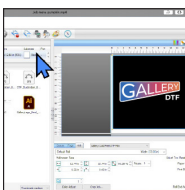


## GALLERY DTF FILM

- Available in 13" x 100 yards rolls
- No need for special room humidity - works across a wide range of temp/humidity

## GALLERY DTF RIP PC SOFTWARE

- Based on the latest CADlink v11 engine
- Simplified user interface and pre-configured settings to exactly match Gallery inks/film/powder so that you get perfect results every time.
- Create halftone/rasterized images or knock out base color of the garment to give a softer hand feel.



## GALLERY DTF 13" PRINTER SPECIFICATIONS

**Print Head:** 1390

**Printing Sizes:** Up to 13" width film rolls

**Ink Type:** Gallery DTF Ink

**Printing Colors:** CMYK+WW

**Printing Speeds:** 5 square feet per hour - 1440 x 1080 high quality  
 8 square feet per hour - 1440 x 1080 high speed  
 12 square feet per hour - 1440 x 720 high speed

**Product Weight:** 55.11 lbs

**Product Dimensions Without Tray:** (LxWxH): 19.75" x 29" x 9.7"

**Product Dimensions With Tray:** (LxWxH): 28.25" x 29" x 9.7"

**Packaging Dimensions:** (LxWxH): 31.5" x 21.5" x 12"

**Power Requirement:** 110 Volts / 15 Amps

**Communication:** USB

